

THE HOLLY

4 Bedroom Home



Artist's Impression

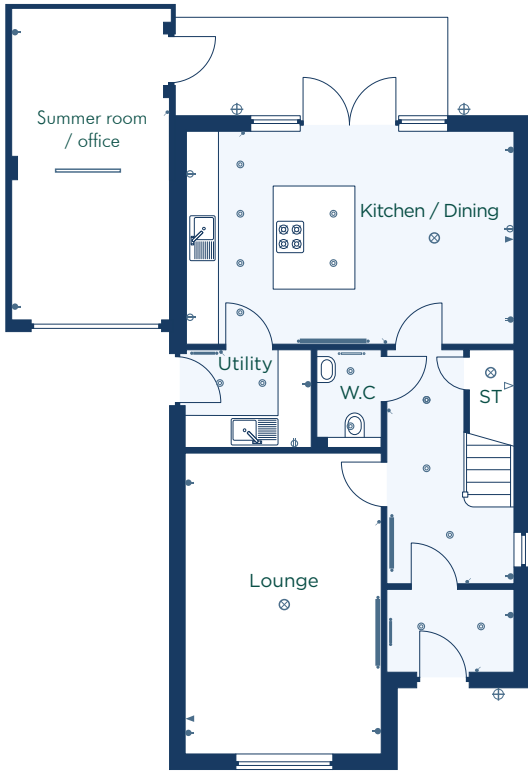
A carefully designed four bedroom detached home with summer room / office .

Plot: 25

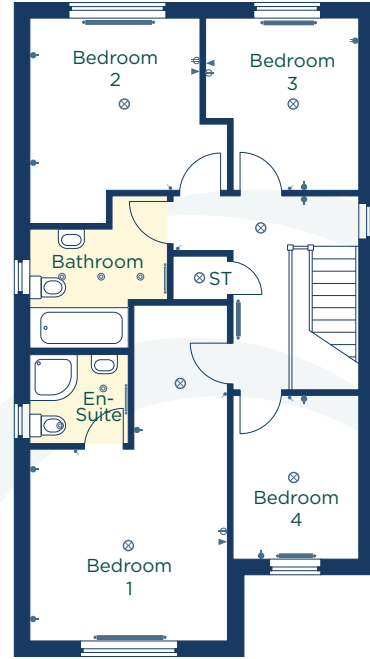
THE HOLLY

4 Bedroom Home

Ground Floor



First Floor



Kitchen / Dining
6000 x 3900 19'8" x 12'10"

Lounge
3600 x 5500 11'10" x 18'1"

Utility
2300 x 1800 7'7" x 5'11"

W.C
1200 x 1800 3'11" x 5'11"

Summer room/office
2900 x 5685 9'6" x 18'8"

Bedroom 1
3600 x 6150 11'10" x 20'2"

En-Suite
1800 x 1650 5'11" x 5'5"

Bedroom 2
3100 x 3750 10'2" x 12'4"

Bedroom 3
2800 x 3150 9'2" x 10'4"

Bedroom 4
2300 x 3000 7'7" x 9'10"

Bathroom
2500 x 2200 8'2" x 7'3"

 Vinyl flooring  Laminate flooring

-  Low level socket
-  High level socket
-  Pendant light
-  External light
-  Fluorescent light
-  Spotlight
-  Light switch
-  TV point
-  BT point
-  Radiator
-  Towel rail

**CONSUMER
CODE FOR
HOME BUILDERS**

www.consumercode.co.uk

danumhomes.co.uk

All information contained in this leaflet is taken from design intent material and may be subject to further design development. Images are for illustration only and do not form part of any contract of sale. The dimensions and layouts given are estimated and for guidance only and are subject to chosen plot. T2 4457. Revision Date: 01.08.22 Revision: 04

The
Pavilion